

## Steel Transport Chair

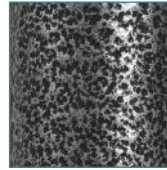


FIGURE A



FIGURE B

- Weighs 26 lbs
- Attractive silver vein finish (Figure A)
- Available in 17" or 19" seat widths
- Back folds down for storage and transport (Figure B)
- Swing-away footrests come standard
- Padded armrests provide additional comfort
- 8" casters in front and rear
- Comes with attractive nylon upholstery that is durable and easy-to-clean
- Standard rear wheel locks
- Comes with upholstery handles to fold chair
- Convenient cup holder can easily attach to chair Sold separately (Model# STDS1040S)

### PRODUCTS

#### Description

TR37E-SV	Silver Vein Frame, Black Upholstery, Trans Chair Econ 17in Slv Vein 1/cs, 1/cs
TR39E-SV	Silver Vein Frame, Black Upholstery, TransChair Econ 19in SlvVein, 1/cs

### SPECIFICATIONS

#### Description

Overall Width (TR37)	21.5" (open)   8" (closed)
Overall Width (TR39)	23.5" (open)   10.75" (closed)
Overall Height	39"
Seat-To-Floor Height	19"
Back Height	18"
Seat Dimensions (TR37)	17" (W) x 16" (D)
Seat Dimensions (TR39)	19" (W) x 16" (D)
Overall Length w/Riggings	33"
Weight	26 lbs.
Carton Shipping Weight	31 lbs.
Weight Limit	250 lbs.
Warranty	Limited Lifetime

### ACCESSORIES

#### Description

STDS1040S	Universal Cup Holder, 1/ea
-----------	----------------------------

### PARTS

#### Description

STDS2349BLK	Back Upholstery 17", 1/bx
STDS2351BLK	back upholstery for s/n with A, 1/bx
STDS4S3601	Back Cane, 1/ea
STDS4S1503	Folding Hinge TR39, 1/ea
STDS1070	Seat Rail Guide, 1/ea

PARTS	Description
STDS4011	rubber tip, 1/ea
STDS4S092L	Brake, 1/ea
STDS4S092R	Brake, 1/ea
STDS4020	tipping sleeve, 1/ea
STDS4S3602	Rear Axle Bearing, 1/pr
STDS4S3603	Hub Cap, 1/pr
STDS4S3604	Rear Axle, 1/ea
STDS4S3605	Rear Wheel, 1/ea
STDS4S36X7-DDA	Crossframe for TR37E-SV-DDA, 1/ea
STDS4S36X9-DDA	Crossframe for TR39E-SV-DDA, 1/ea
STDS1011	Caster Bearing, 1/ea
STDS1002-1	Caster axle bolt, 1/ea
STDS3J2432	Caster, 1/ea
STDS3J4533	Fork, 1/ea
STDS8M4601	Fork Stem Bearings, 1/ea
STDS1069-4	Hanger Pin Set (4), 4/pkg
STDS2348BLK	Seat Upholstery 17", 1/bx
STDS2358BLK	Seat Upholstery 18", 1/bx
STDS4S3606	Dust Cap, 1/pr
STDSDSKVB	Arm Pad Desk, 1/ea
STDS3J0951	Axle Spacer, 1/ea
STDS5N2210	Slide Tube & Bushing, 1/ea
STDS5N2235	Slide Tube Retainer, 1/ea
STDSSDDAL	Desk Arm Left, 1/ea
STDSSDDAR	Desk Arm Right, 1/ea
TR39SF-SV	Footrest, 1/ea
STDS850-PB	Seat Belt, 1/ea
STDS001000	Axle Cap, 1/ea
STDS001000	Axle Cap 8mm
STDS1002-1	Axle for 8" caster
STDS1011	Wheel Bearing
STDS1069-4	Hanger Pins
STDS1070	Seat Rail Guide
STDS2348BLK	Seat Uphol.17"x16"
STDS2349BLK	Back Uphol 17"x18"
STDS2351BLK	Back Uphol 19"x18"
STDS2358BLK	Seat Uphol. 18"x16"
STDS3J2432	Caster with 8mm Bearings
STDS3J4533	Caster Fork
STDS4011	BrakeTip
STDS4020	
STDS4S092L	Brake
STDS4S092R	Brake
STDS4S1503	Folding Hinge
STDS4S3601	PushHandle
STDS4S3602	Rear Axle Bearing
STDS4S3603	Rear Hub Cap
STDS4S3604	Rear Axle
STDS4S3605	Rear Wheel
STDS4S3606	Fork Stem Cap
STDS4S36X7-DDA	Crossframe for TR37E-SV-DDA
STDS4S36X9-DDA	Crossframe for TR39E-SV-DDA
STDS5N2210	SlideTube&Bushing
STDS5N2235	Slide Tube Retainer

- Weighs 26 lbs

STDS850-PB	Seat Belt
STDS8M4601	ForkStemBearing
STDSDSKVB	UniversalWheelChairVinylDeskArmPad
STDSSDDAL	Desk Arm Assm. SlvrSport
STDSSDDAR	Desk Arm Assm. SlvrSport
TR39SF-SV	Footrest